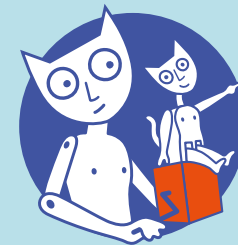


CABARET MECHANICAL THEATRE

**TOURING AUTOMATA
EXHIBITIONS**



Cabaret's visually stunning art, science and engineering travelling exhibitions are fun filled interactive educational experiences, perfect for children, families, school groups and adults.



**CABARET
MECHANICAL
THEATRE**

WHY HOST A CABARET MECHANICAL THEATRE EXHIBITION?



Cabaret Mechanical Theatre's (CMT) beautiful hand-crafted automata exhibitions have multiple points of engagement.

- **Original automata artworks, interactives and artefacts from the Cabaret Mechanical Theatre collection.** These whimsical mechanical artworks illustrate their inner workings at the push of a button or turn of a lever, enabling a greater level of understanding of mechanics, engineering and art.

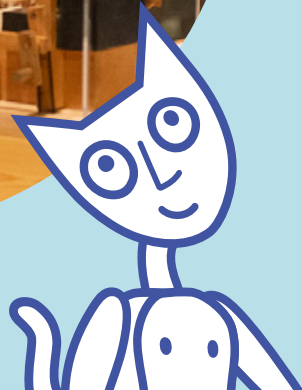
Fun, entertaining and highly interactive, they provide an unforgettable, and delightful experience for a wide range of audiences.

Cabaret Mechanical Theatre have played an integral role in the revival of automata and in supporting a growing number of automata makers.

Recognising the potential popularity of these moving machines, CMT actively encouraged a group of makers in Falmouth, Cornwall to make automata to sell in their local craft shop, Cabaret. CMT often actively guided the artists' creative direction, looking for wit and entertainment in the automata that they collected.

Memorabilia, artefacts, photographs and fascinating documents are included as part of the exhibition and provide context and understanding of CMT's role in supporting this wonderful craft of automata making in the United Kingdom and throughout the world.

- **Attract more visitors** to your venue by attracting audiences of all kinds including schools groups, children, families, adults, art enthusiasts, and people who have the desire to create, invent, and design. CMT's shows are crowd pleasing, entertaining and fun. Perfect as a stand-alone temporary exhibition, or as part of a wider offer for those venues looking for something different that will appeal to everyone.



- **Flexible modular exhibition options.** We have three ready to go branded exhibitions – Fantastic Fairground Factory, Cabaret Mechanical Marvels and Mechanics Alive!
CMT can also work with you to create an exhibition and engagement programme to suit the size of your venue and that will fit your budget. CMT can provide art work and templates for posters and striking display panels such as artists’ profiles and the working process of artist and CMT history.
- **Artist Films.** We have high quality, captioned CMT artist interview films to screen in your gallery giving the visitors more in depth knowledge behind the exhibits.
- **In-person Workshops.** We can support you in running in-house workshops for all audiences in a variety of ways. We have a pool of expert artists and workshop leaders from the UK and elsewhere. Our range of affordable kits and materials are suitable for all ages and abilities. In addition we can offer training for your in-house learning teams.
- **Online workshops options.** Specialist CMT facilitators and workshop leaders can deliver a range of hands-on making online workshops for groups of all sizes and abilities making sure you reach the broadest audience possible.

We are experienced working in and out of a school context, with adults, as well as working with more advanced enthusiasts and artists. Our ready to share kits and materials create hands-on convivial virtual environments bringing together participants world wide.

- **Kits and merchandise.** Our new range of CMT branded kits and merchandise are popular purchases in the gift shop. The kits are suitable for all ages and abilities providing beginners and experienced makers tools and techniques to learn, create and explore at affordable prices.
- **Tinkering Space.** The CMT automata collection and new and innovative educational and automata-making workshops programmes provide a wonderful backdrop, and inspiring environment, for hands-on making, and tinkering, workshops in your gallery space. They will add an extra dimension to any existing tinkering studio encouraging repeat visitors, and attracting new audiences.

Cabaret’s exhibitions are perfect for people who have the desire to create, invent, and design...



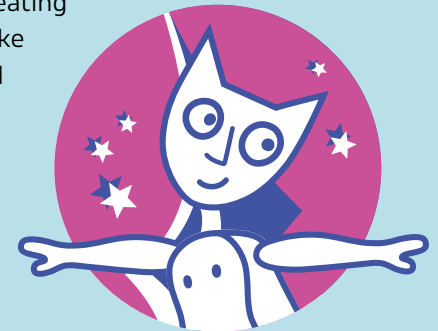
COVID COMPLIANT MODIFICATIONS

In 2020-21 CMT continued our exhibition programme working closely with our touring partners to ensure exhibitions remain safe and open whenever possible.



A combination of measures can be put in place that include:

- Supply of free CMT branded pencils to activate the push button automata therefore, reducing risk of contamination and frequency of sanitising. For safety the pencils are unsharpened and with an eraser creating non-slip contact with the push button. Visitors receive this take home souvenir of the exhibition or can choose to leave behind to be sanitised and recycled for future visitors.
- Reduced interactive mechanical exhibits with optional take-home automata making kits and activity cards for visitors.
- Branded way-finding to assist one-way systems and social distancing.
- Online resources including workshops, talks and 360° virtual exhibition tours.
- Remote installations. Recorded and live technical support to limit travel and reduce the number of installation technicians visiting the gallery.
- Regular video calls to reduce the need for in person meetings.
- Flexible exhibition dates are given wherever possible.



Social distancing signage example

AT A GLANCE

What is provided by CMT:

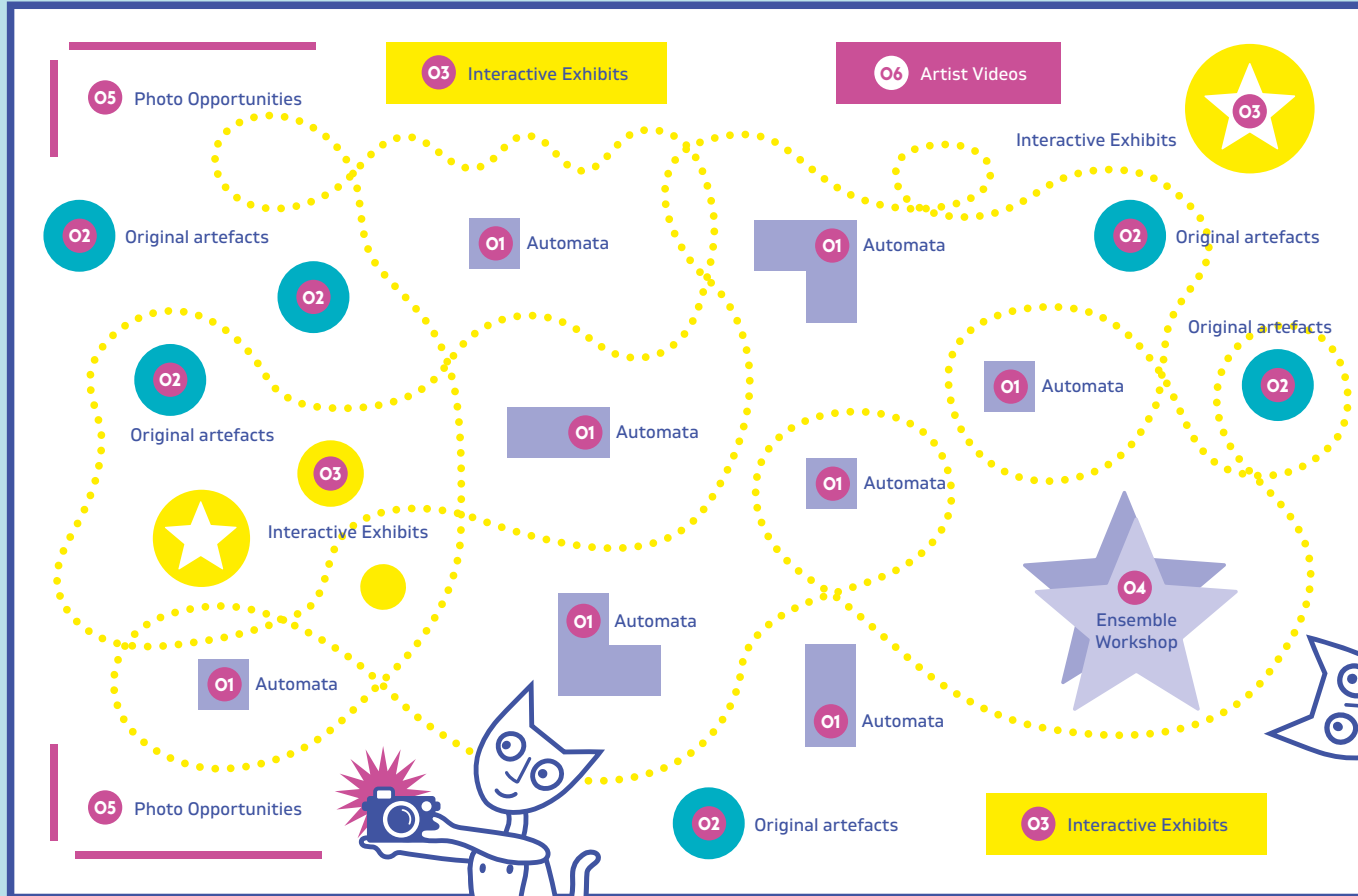
- Original automata artworks from the Cabaret Mechanical Theatre collection.
- Interactive hands-on mechanical exhibits.
- Artefacts from the original Cabaret Mechanical Theatre.
- Exclusive captioned artist interview videos.
- Ensemble Workshop Kit.
- Print-ready artwork for interpretation panels, marketing and wayfinding.

What the host needs to provide:

- Gallery space of approximately 140-250m².
- Translation and production of exhibition captions and panels.
- Approximately two staff to assist with installation and dismantling the exhibition.
- Facilitators for in-house workshops.
- Monitor or screen for Artist Videos.



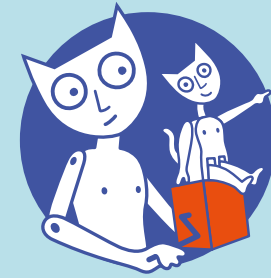
EXAMPLE EXHIBITION LAYOUT



EXHIBITS

- O1** 10 automata
- O2** Original artefacts
- O3** Interactive Exhibits
- O4** Ensemble Workshop
- O5** Photo Opportunities
- O6** Artist Videos

WHO ARE THE CABARET MECHANICAL THEATRE?



**CABARET
MECHANICAL
THEATRE**

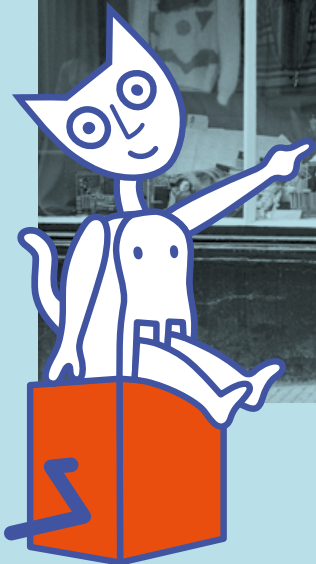
The Cabaret Mechanical Theatre Company (CMT), was formed in 1979 by Sue Jackson, as a small general craft shop, simply called Cabaret, located in Cornwall, United Kingdom. Collaborating with local artists CMT Cabaret specialised in creating hand-made automata that were exhibited and sold to the general public.

Due to the company's huge success it moved its premises to London in 1984, where it soon established an international reputation for the quality and uniqueness of its product. CMT continued to support a growing number of makers, and helped to define automata as a craft genre, encouraging organisations like the Crafts Council of Great Britain to recognise its significance and collect some of its finest examples.

Led by Jackson's daughter Sarah Alexander, Sarah recognised how the automata captivated the imagination of their audiences and provided the perfect touring platform in which to stimulate interest in science, engineering, design, creativity art and invention.



Paul Spooner and Sue Jackson, Cabaret, Cornwall, UK 1983



WHO ARE THE CABARET MECHANICAL THEATRE?

Working with science centres, museums, art galleries, and attractions, a number of exhibitions and workshops were subsequently created gaining universal popularity. Over the past 30 years the exhibitions have toured to prestigious venues worldwide, including:

The Exploratorium San Francisco, USA

South Bank Centre London, United Kingdom

Phaeno, Wolfsburg Germany

El Parque de las Ciencias Granada, Spain

Rijksmuseum Boerhaave Leiden, Netherlands

Abu Dhabi Science Festival Abu Dhabi, UAE

Shanghai Science Centre China

Questacon Science Museum Australia

Singapore Science Centre Singapore

Seongnam Arts Center Seoul, Korea

V&A London, United Kingdom

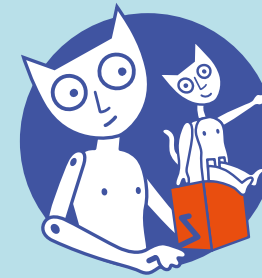
Frost Science Museum Miami, USA

Chicago Museum of Science USA

ThinkTank Science Museum Birmingham, UK

Teknikens Hus Luleå, Sweden

Life Science Centre Newcastle, UK



CABARET MECHANICAL THEATRE

Cabaret Mechanical Theatre's
artists include:

Paul Spooner

Ron Fuller

Peter Markey

Matt Smith

Tim Hunkin

Lucy Casson

Keith Newstead

Carlos Zapata

John Lumbus

Patrick Bond

Pierre Mayer

Kazu Harada

Arthur Ganson

Fi Henshall

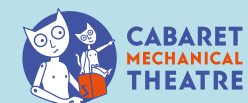
Martin Smith

Stephen Guy


Wanda Sowry

Lisa Slater

cabaret.co.uk



CABARET
MECHANICAL
THEATRE



CMT's automata
shows have been seen by
over 10 million people
worldwide in the past
three decades!

CABARET MECHANICAL THEATRE

CONTACT US!

For further details on availability and
hire fees please contact:

Sarah Alexander
Cabaret Mechanical Theatre



T: +44 (0)7917 661575

E: sarah@cabaret.co.uk

cabaret.co.uk

Follow us on social media for
the latest news & events:

 CabaretMechanicalTheatre

 CabaretMT  cabmech

PHOTOS:

Gayle Laird © Exploratorium
Pg1 top right; Pg2 left; Pg3 bottom right
© Bexhill Observer Pg4 left
© Steve Tanner Pg8

DESIGN: ARALDESIGN.UK